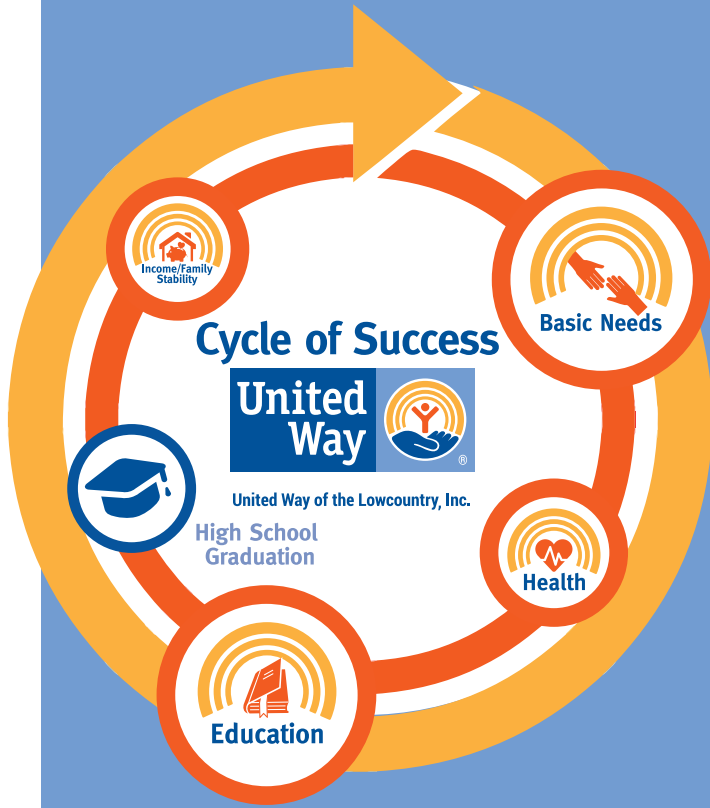


GIVE. ADVOCATE. VOLUNTEER.



Did you know?



Approximately 1 in 5 children (21.3%) live in poverty in Beaufort County



Approximately 2 out of 5 children (40.1%) live in poverty in Jasper County

% of students **NOT** proficient in literacy - 2016 (Rising 4th Graders)

84%

in Jasper County

54%

in Beaufort County

57%

in South Carolina

Children who are not reading well by the end of the 3rd grade are 4X more likely to drop out of school

Education Impact . . .

Together, we are making a difference and getting results through our Early Grade Reading Initiative, Read Indeed!



12 Sites



800 Students



300+ volunteers & AmeriCorps Members

VITA \$

Volunteer Income Tax Assistance



58 volunteers



2,082 tax returns filed through VITA



Economic Impact: More than \$4.25 million dollars in 2016-2017

Results are adding up! % of students who increased their reading scores

94%

in Jasper County

95%

in Beaufort County

www.uwlowcountry.org

HELPLINE ● ● ● 843.524.4357

Through your generosity last year, United Way of the Lowcountry's HELPLINE answered **1,644 calls**, served **566 walk-ins** and provided **2,665 referrals**.

Sources: South Carolina Department of Education (State Report Cards) & Kids Count Data Center

United Way



United Way of the Lowcountry, Inc.

United Way of the Lowcountry works with our funded agencies to meet the immediate needs of our neighbors and create lasting, positive change in our community through Community Impact by focusing on Basic Needs, Education, Health and Income/Family Stability.

COMMUNITY IMPACT

Lowcountry Service Area (BEAUFORT & JASPER COUNTIES)
 Bluffton/ Hilton Head Service Area Jasper Service Area
 Beaufort Service Area Beaufort County Service Area

VISIT & FOLLOW US ONLINE



Agape Family Life Center, Inc. - Carolina Feed the Hungry
 Child Abuse Prevention Association (CAPA) - Foster Home Licensing
 Community Service Organization (CSO) - Charity Tracker
 Consumer Credit Counseling Services (CCCS) - Mortgage Assistance
 Family Promise of Beaufort County - Family Shelter Program
HELP of Beaufort - Housing Stability
 Hilton Head Island Deep Well Project - Client Rent & Mortgage Payment Program
 Hopeful Horizons - Domestic Violence Shelter
 LowCountry Habitat for Humanity - Family Home Ownership Program
 Second Helpings - Second Helpings Food Distribution Programs
 The Salvation Army - Emergency Rental Assistance



Child Abuse Prevention Association (CAPA) - Parent Aide Home Visitation Program
 Consumer Credit Counseling Services (CCCS) - Financial Stability
 Consumer Credit Counseling Services (CCCS) - Student Financial Success
 Consumer Credit Counseling Services (CCCS) - Economic Empowerment
 Lowcountry Legal Volunteers - Financial Freedom for Families
 Programs for Exceptional People (PEP) - Adult Vocational Rehabilitation
 Wardle Family YMCA - Discovery Kids Preschool Program



AMIKids - Educational Program
 Bluffton Self Help - Educational Assistance Program
 Born To Read - Born To Read Programs
 Boy Scouts - Lowcountry District BSA
 Boys and Girls Clubs - Project Learn
 Boys and Girls Clubs - SMART MOVES
 Child Abuse Prevention Association (CAPA) - Prevention Awareness & Training
 Hopeful Horizons - Sexual Violence Prevention Program
 Love House Ministries - Dollar A Day Aftercare
 Love House Ministries - Summer Learning Center
 Neighborhood Outreach Connection - Empowering Children
THUMBS Up - Year-Round Literacy Program
 Wardle Family YMCA - Discovery Kids Preschool Program
 Wardle Family YMCA - Jasper Co. Summer Camp
 Wardle Family YMCA - YMCA Afterschool Camp



Alzheimer's Family Services - In-Home Respite
 Alzheimer's Family Services - Social Day Program
 Good Neighbor Free Medical Clinic - Free Medical Clinic
 Hopeful Horizons - Children's Advocacy Program
 Hopeful Horizons - Rape Crisis Program
 Ronald McDonald Charities - Dental Care Mobile
 Wardle Family YMCA - Aquatics



uwlowncountry.org



CONTACT

843.982.3040

P.O. Box 202

Beaufort, SC 29901

BEAUFORT
 843-982-3040
 1277 Ribaut Road

HILTON HEAD / BLUFFTON
 843-837-2000
 10 Buckingham Plantation Drive, Suite D

JASPER COUNTY
 843-645-6500
 1509 Grays Highway

www.uwlowncountry.org



United Way of the Lowcountry, Inc.